

Klasyfikacja związków organicznych



dr inż. Piotr Niemiec

Katedra Chemii,

Wydział Nauk Chemicznych i Przyrodniczych

Akademia Tarnowska

mail: p_niemiec@atar.edu.pl

www: <https://piotrniemiec.atar.edu.pl>

Rodzina

Alkany

Alkeny

Alkiny

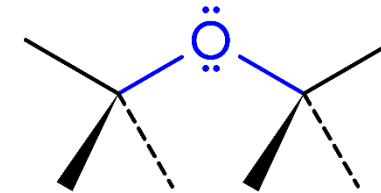
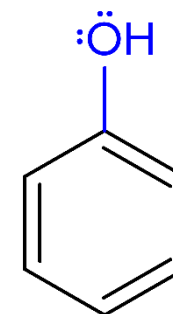
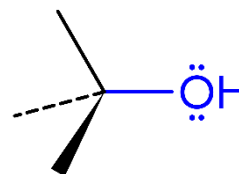
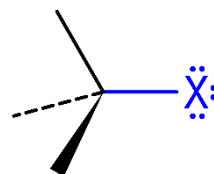
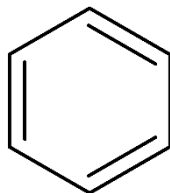
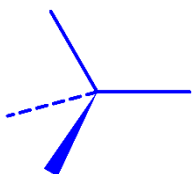
Areny

Haloalkany

Alkohole

Fenole

Etery



Wzór ogólny

RH

$RHC=CH_2$
 $R_2C=CH_2$
 $R_2C=CHR$
 $R_2C=CR_2$

$RC\equiv CH$
 $RC\equiv CR$

ArH

RX
 $X=F, Cl, Br, I$

ROH

$ArOH$

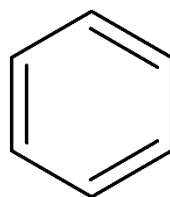
ROR

Przykład

CH_3CH_3

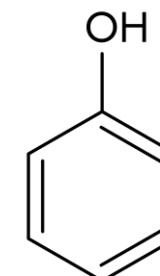
$CH_2=CH_2$

$CH\equiv CH$



CH_3CH_2Cl

CH_3CH_2OH



CH_3OCH_3

Etan

Eten

Etyn

Benzen

Chloroetan

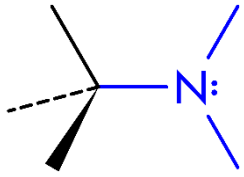
Etanol

Fenol

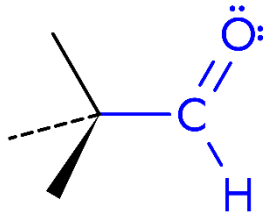
Metoksyetan

Rodzina

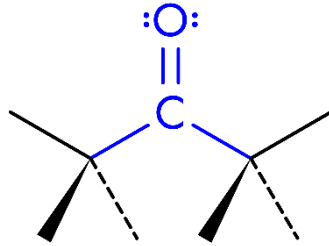
Aminy



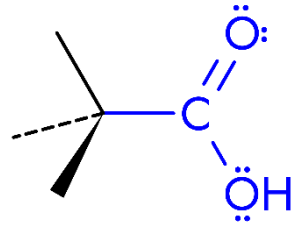
Aldehydy



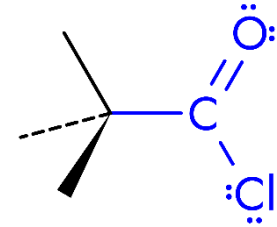
Ketony



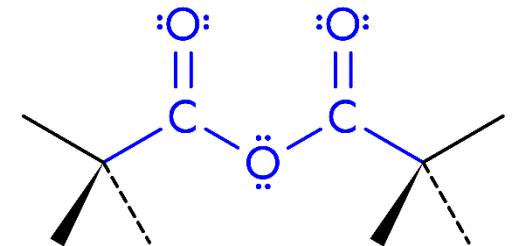
Kwasy karboksylowe



Chlorki kwasowe



Bezwodniki kwasowe



Wzór ogólny

RNH_2
 RNHR
 RNR_2

RCHO

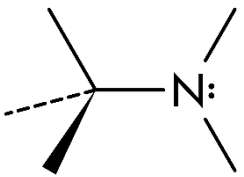
$\text{RC(O)R}'$

RC(O)OH

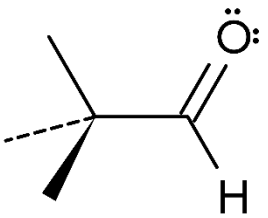
RC(O)Cl

RC(O)OC(O)R

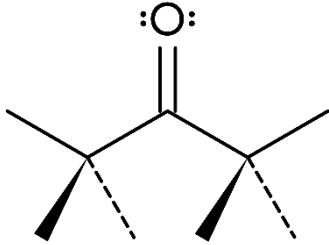
Przykład



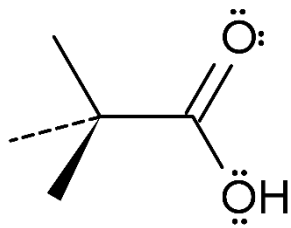
Metanoamina



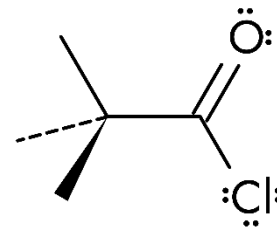
Etanal



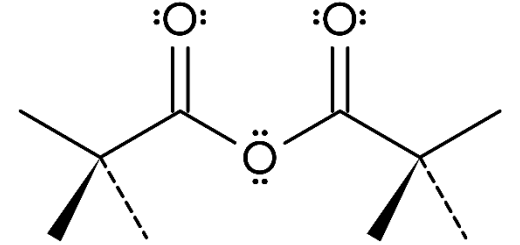
Propanon



kw. octowy



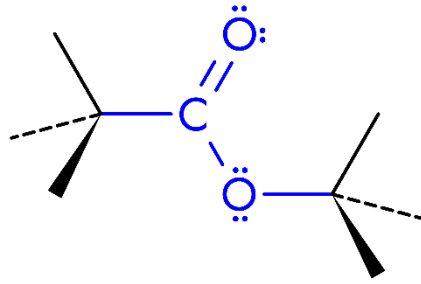
Chlorek etanoilu



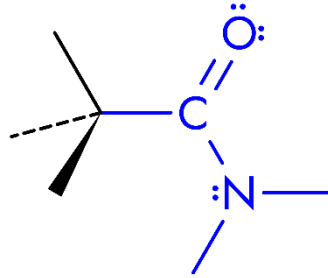
Bezw. octowy

Rodzina

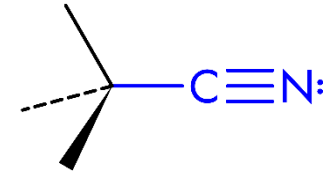
Estry



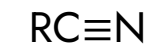
Amidy



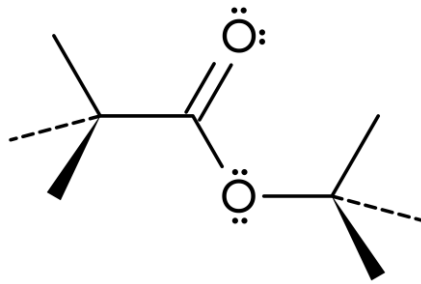
Nitryle



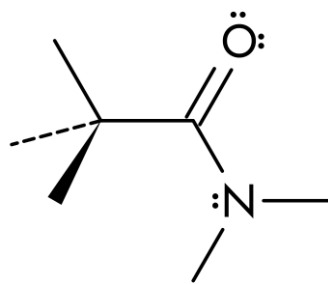
Wzór ogólny



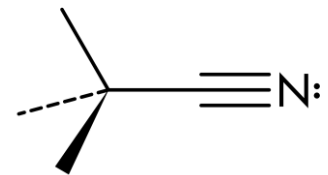
Przykład



Mrówczan metylu



Etanoamid



Metanonitryl